

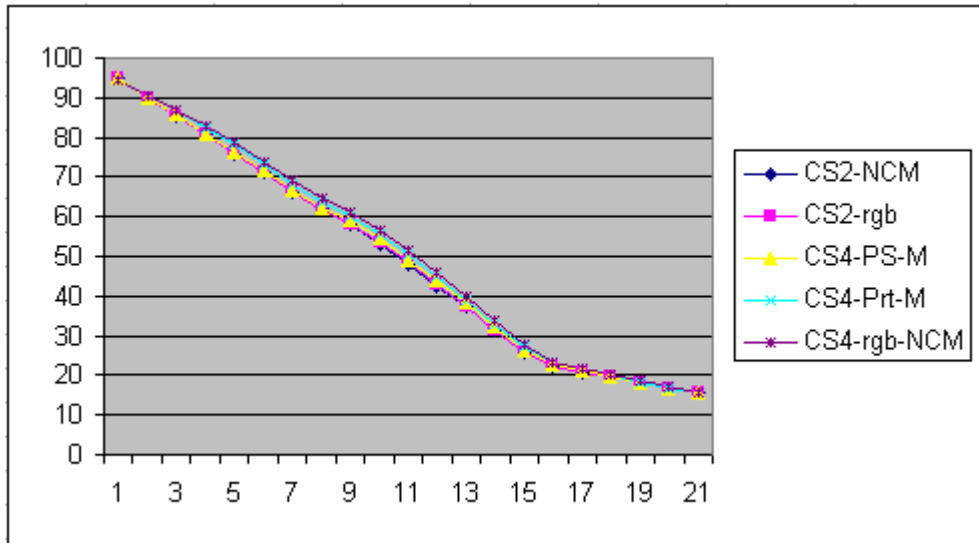
Photoshop CS2 v. CS4  
 Print Preview Settings  
 Paul Roark  
 11-24-09

CS4 dropped the “No Color Management” option for grayscale printing.

Using a 1400 with Eb14 inkset, and printing on Red River Premium Matte, I printed a series of 21-step test files to see how the most likely options for settings compared. The file was un-tagged. The PS Color Settings include gray working space Gray Gamma 2.2 and rgb working space Adobe RGB (1998). The printer driver settings were my matte standard Color Controls with gamma 2.2.

The CS2 prints were with (1) a grayscale file and “No Color Management” set in the print preview and (2) an rgb file with “No Color Management” set. The CS4 prints were (3) grayscale file with “Photoshop Manages Colors,” “Working Gray – Gray Gamma 2.2,” and “Perceptual” BCP, (4) grayscale file with “Printer Manages Colors” and “Perceptual,” and (5) an rgb file with “No Color Management.”

The graph below shows the Lab L for the 5 test strips.



The main differences may be due to printer inconsistencies. Looking at the 50% densities, the Lab L numbers are as follows:

CS2 NCM	CS2 RGB	CS4 PS Manages	CS4 Printer Manages	CS4 RGB No Color Management
47.97	48.35	49.24	50.26	51.53

CS2 was then used to repeat the first printer settings. The 50% Lab L was 51.2 – much closer to the CS4 test strips than the first CS2 test strip. So, I think we may be seeing the printer warming up as much as anything.