

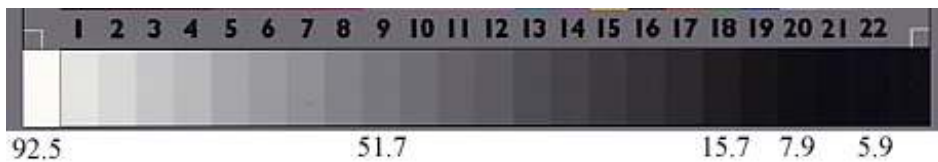
Other useable reference guides for calibrating the scanner include:

One widely available middle gray Lab 50 reference is the Kodak 18% standard gray card. My Kodak gray card reads Lab L 50 and would make a good midtone reference point.

Many with scanners also probably received an "IT8" target with their scanners. I found one in the back of a Monaco EZcolor User Guide that came with my scanner. It looks like this:



Of interest for reference points is the set of grayscale patches at the bottom of the target.



I've noted the Lab L values for the IT8 target I have, above.

Paul

www.PaulRoark.com