

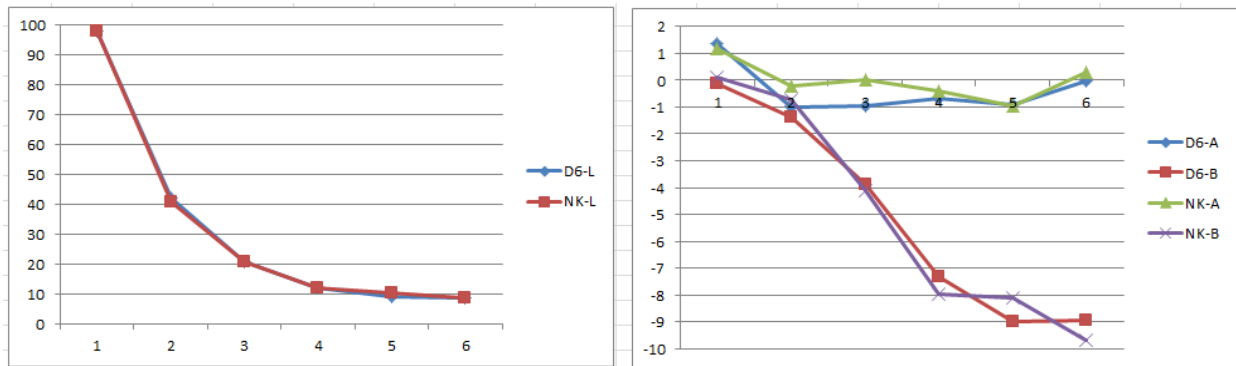
UltraChrome D6 Black compared to Noritsu D701 Black

Paul Roark

I obtained a sample of the new D6 black ink for making some test prints.

The results of my printing suggest that the UltraChrome D6 is the same as the Noritsu and Claria black dyes.

See the Lab L, A and B graphs for the D6 and Noritsu ("NK") black inks on Canson Baryta paper, below:



In test strips and images printed with both the D6 K and the Noritsu K, I can see no differences.

I expect these are essentially if not exactly the same inks.