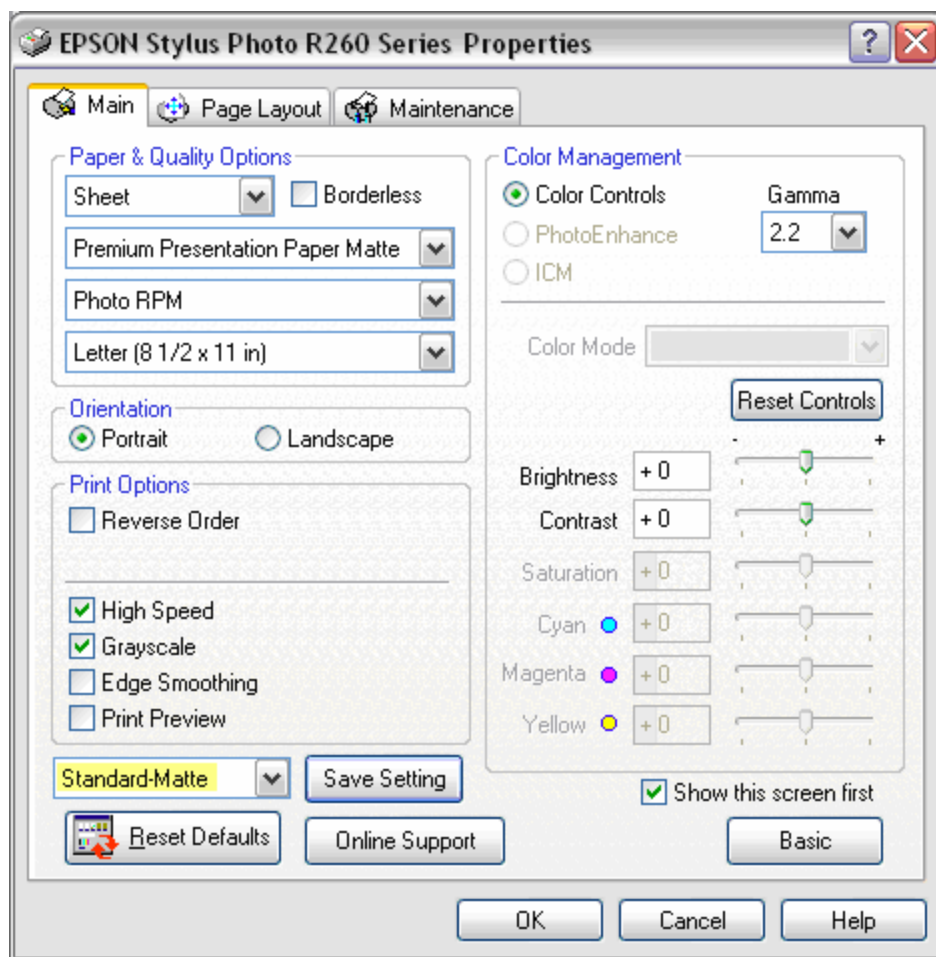


UT-RC Epson Driver Settings in a Nutshell

The following screen grabs show the standard printer driver Properties settings for matte and glossy paper. For detailed information on the UT-RC inkset and various options that printers have with the R260 and MIS inks, see <http://www.paulroark.com/BW-Info/R260.htm>

Matte Paper

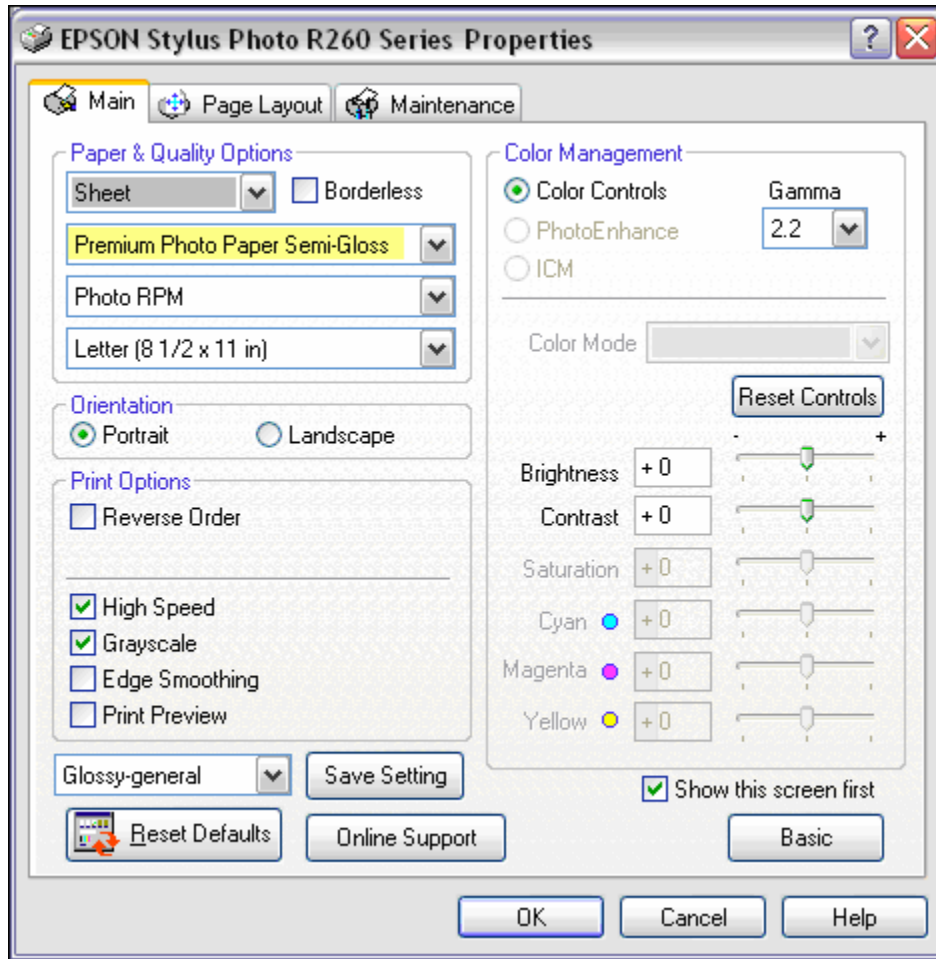
When printing with the UT-RC black and white inkset, the following Epson driver Properties settings should be used as a starting place. It is recommended that you save these settings as the standard matte paper settings.



These settings were optimized for MIS Eboni matte black ink.

Glossy Paper

The only change in the driver Properties settings for glossy paper is the Paper type selection, highlighted below.



These settings were optimized for MIS RC-PK, PKN and PKC.

Crane Silver Rag uses paper type setting Photo Paper Glossy.

Note on ICCs

A number of ICCs for the UT-RC inkset and the R260 can be downloaded from <http://www.paulroark.com/BW-Info/R260-ICCs.zip>.

See <http://www.paulroark.com/BW-Info/R260-BW-GS-Eps.pdf> for detailed information regarding these ICCs and the UT-RC B&W inkset in general.

The driver settings are the same as shown above for most of the ICCs. However, if the ICC name includes the term "WCCNN" it is for a custom ink arrangement that has one warm light ink (Y position) and two cool light inks (LC & LM) as, and the driver settings are different. See the web page above for more information on this ink arrangement.